

A PROFESSIONAL UPS

- Designed for professional environments, protection against power cuts and over voltage is ensured by Line Interactive technology with automatic voltage regulation (AVR).

An installation adapted to the environment

- It can even be installed as a Tower, Mini-Tower or 19" Rack, depending on the user's needs.

Simplified maintenance

- Battery 'hot swap', without closing down other applications
- Battery can be changed from the front in rack installations
- Battery check system and replacement indicator.

Adapted connections

- Easy connections to the applications (depending on power) via 6 or 8 IEC 320 (IT standard) sockets.

A secure UPS

- EPO (Emergency Power Off) emergency stop.

Data line protection

- With RJ45 connector.

Communication with the computer system

- RS232 or USB* advanced connections for the management of the power supply and local/remote shutdown of applications
- Advanced diagnostics and remote control via various protocols and environments of use: JBUS, HID, SNMP, TCP/IP.

* USB models from 1500 to 3000 VA.

INTERACTIVE LINE WITH
AVR - SINUSOIDAL OUTPUT

2 YEAR GUARANTEE



NETYS PR
1000 VA



NETYS PR
1500/2000 VA



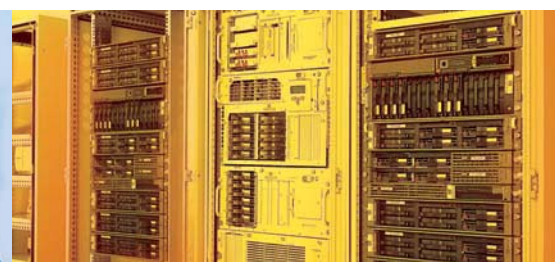
NETYS PR
3000 VA



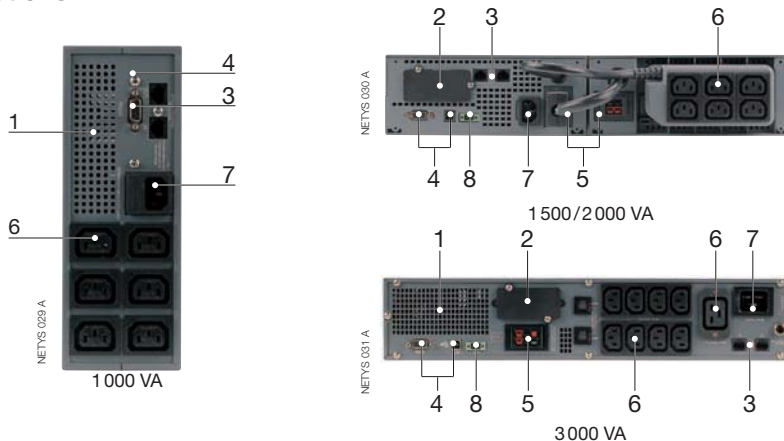
NETYS PR
1500/2000 VA Rack

Your protection
for

- > Professional and IT equipment
- > Servers and Networking devices
- > CAD/graphic workstations with monitors and peripherals
- > Control systems

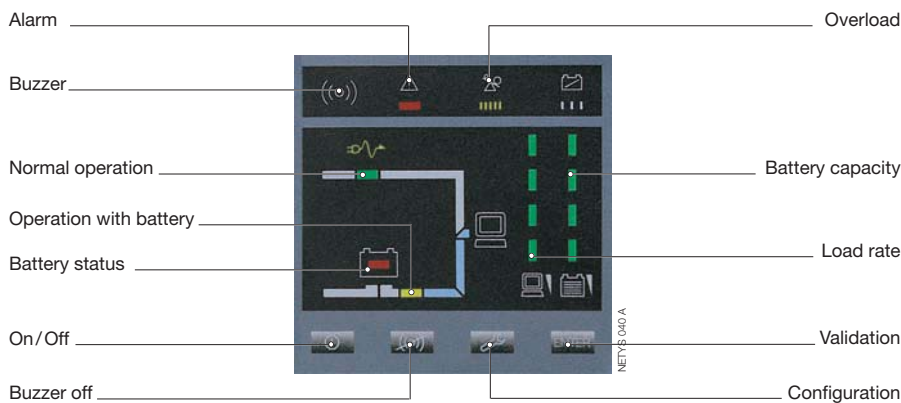


Connections



1. Fan/air vents
2. Slot for optional communication boards
3. NTP protections (RJ45)
4. RS232/USB serial port
5. Connector for external battery extension
6. UPS output sockets
7. Input socket with fuse
8. EPO Emergency Power Off

Control panel



Communication options

- **UNI VISION** software for the control and automatic shutdown of applications connected to Windows™ and Linux. Free to download from our website: www.socomec.com.
- **UNI VISION PRO** software for the management of connected applications and to control automatic shutdowns. Serial cable included.
- **NET VISION** interface SNMP/ WEB manager for the connection of the UPS to the Ethernet network. This accessory can be integrated in the UPS by means of the slot located on the back panel.

[Info. p. 87]

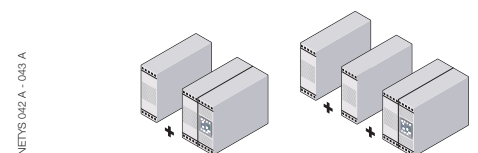
Technical data



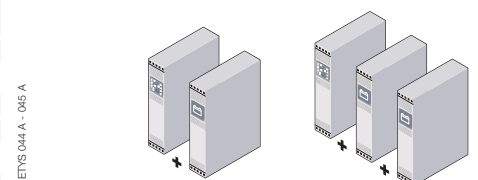
MODELS	NETYS PR 1000	NETYS PR 1500	NETYS PR 2000	NETYS PR 3000
ITEM CODE	NET1000-PR	NET1500-PR	NET2000-PR	NET3000-PR
UPS power	1000 VA (700 W)	1500 VA (1000 W)	2000 VA (1340 W)	3000 VA (2100 W)
Input	230V (160 ÷ 276V); 50/60 Hz with automatic selection			
Output	230V nominal; 50/60 Hz			
Output sockets	6 IEC320 (10A)			2 sets of 4 IEC320 (10A) + 1 16A socket
Data line protection	NTP data line suppressor: RJ45 10 Base T			
BATTERIES				
Type	sealed lead-acid maintenance free - expected life 3/5 years			
Typical back-up time ⁽¹⁾	8 min.	8 min.	8 min.	8 min.
COMMUNICATION				
Connection interface	RS232	RS232 and USB		
Ethernet	NET VISION interface: Web Server/SNMP			
ENVIRONMENT				
Dimensions W x D x H (mm)	87 x 385 x 235	2 x (87 x 415 x 220)		87 x 585 x 440
Dimensions rack W x D x H (mm)	-	435 x 415 x 87 (2U)		440 x 585 x 87
Weight	9.6 kg	18 kg	19 kg	31.5 kg
Reference standards	(EN) IEC62040-1-1 (safety), EN50091-2/IEC62040-2 (EMC), EN61000-4-5/C62.41: 1991 (over voltage)			

(1) Back-up time at 75 % of the nominal power.

Battery extension



NETYS PR	+ 1 (NETEX 20 PR)	+ 2 (NETEX 20 PR)
1500	25 min.	45 min.
2000	20 min.	36 min.



NETYS PR	+ 1 (NETEX 30 PR)	+ 2 (NETEX 30 PR)
3000	30 min.	60 min.