

MODULYS TC

from 3 000 to 9 000 VA

a modular UPS

for telecommunications applications

The solution for supplying power systems

- Thanks to its particular architecture, designed especially for the telecoms sector, the **Mod-TC** combines batteries with extended back-up time with high capacity.
- **Mod-TC** is the ideal solution for isolated, unmanned installations, such as radio stations or links, mobile radio stations for cellular phone networks and GSM - GPRS - UMTS repeaters.

Batteries and a charger adapted to lengthy back-up times

- Batteries have a lifespan of 10 years (AGM-VRLA technology).
- Battery protection (fuses) connected by boards.
- Front battery access (easy maintenance).
- To guarantee constant and reliable operation, the 30 A battery charger provides rapid and stable recharging of 48 V – 100 Ah batteries after each period of back-up.

Five models available with different architectures

- The **Mod-TC 2XX** stand alone unit provides the ideal solution for applications which do not require an extended back-up time (more than 8 hours for the **Mod-TC 230**) and will not need to be upgraded.
- **Mod-TC 3XX** the redundant modular system.
- **Mod-TC 360** and **Mod-TC 390**. These are flexible, modular, redundant systems to which additional power modules may be installed to increase power or to obtain an operating redundancy N +1.

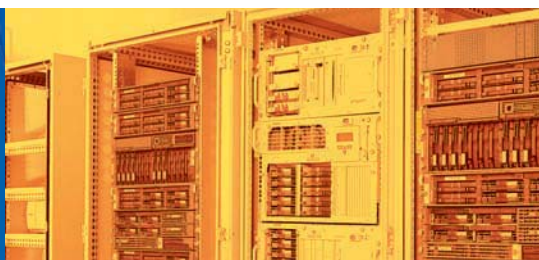
Mod-TC 230-245-260



Mod-TC 360-390

Your protection
for

- > e.business
- > Computer networks
- > Telecommunications



An adaptable system

Mod-TC	VA	Typical back-up time ⁽¹⁾		Expandable up to	
		standard	max.	power	back-up time ⁽²⁾
230	3000	110	420	3000	1200
245	4500	60	270	4500	630
260	6000	45	190	6000	480
360	6000	110	/	9000	550
390	9000	70	/	9000	330

(1) Back-up time at 75% of the load.

(2) Back-up time with additional cabinets, charger included.

Standard equipment

- Two slots for communication boards on **Mod-TC 360** and **390**.
- RS 232/485 serial port (except **TC 230**).
- Signal contacts relay card.
- Separate bypass input on **Mod-TC 245 - 260-360 - 390**.

Accessories

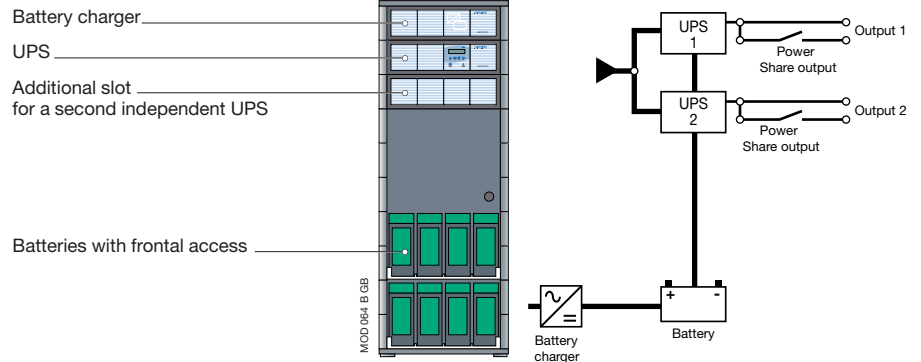
- Temperature sensor on **Mod-TC 360** and **390**.

Communication options

- Dry contacts relay card.
- Advanced communication card.
- Remote monitoring and control kit.
- **NET VISION** interface for LAN Ethernet network [Info. p. 87].

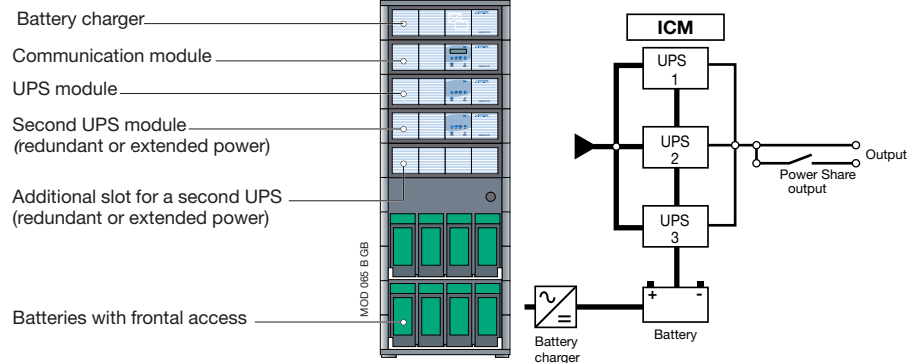
Basic configurations

Mod-TC 2XX system



Model	Mod-TC 230	Mod-TC 245	Mod-TC 260
Mod-RK	1 x 3000VA	1 x 4500 VA	1 x 6000 VA
Battery (48V - 100Ah)	1	1	1

Mod-TC 3XX system



Model	Mod-TC 360	Mod-TC 390
Mod-Power	2 x 3000 VA	2 x 4500VA
Battery (48V - 100Ah)	2	2

Technical Data

UPS TYPE	Mod-TC 230	Mod-TC 245	Mod-TC 260	Mod-TC 360	Mod-TC 390
Input phases	1 ph	1 ph/3 ph	1 ph/3 ph	1 ph	1 ph/3 ph
Input voltage	230 V (1ph) or 400 V (3 ph + N) ± 20%				
Input frequency	from 45 to 65 Hz				
Input power factor	> 0.98				
Input current distortion	sinusoidal absorption (THDI < 6%)				
Output voltage	230 V (1 ph) ± 3% (can be configured for 208/220/240 V)				
Nominal output power (VA)	3000	4500	6000	6000	9000
Nominal output power (W)	2100	3150	4200	4200	6300
Redundant N + 1 up to (VA) ⁽¹⁾	/	/	/	6000	9000
Two independent UPS ⁽¹⁾	3000 + 3000	4500 + 4500	6000 + 6000	/	/
AC/AC global efficiency	90%				
Battery type	long life battery (sealed, maintenance free)				
Back-up time	1 to 8 hours				
Battery tray (100 Ah 48 V) ⁽²⁾	1	1	1	2	2
Recharge period	< 8 hours				
Safety/EMC standards	EN50091-1-1/EN50091-2				
Dimensions W x D x H (mm)	600 x 600 x 1425				
Operating ambient temperature	0 °C to + 40 °C (15 °C to 25 °C for best battery life)				

STANDARDS

Safety	(EN) IEC 62040-1-1
Performance & topology	(EN) IEC 62040-3
EMC standard	EN 50091-2/IEC 62040-2
Product certification	CE
IP rating	IP 20

(1) With the addition of a supplementary UPS module. - (2) Internally or externally extendable (additional cabinet with battery charger).